



**Own
the
future.**

Nature's World School

K - 10 SCHOOL

ADMISSION
PROSPECTUS
FOR
Grades 1 to 5

Embracing Diversity:
Celebrating Ideas,
Perspectives, Cultures,
and You!

Welcome.

NWS is a school, Nestled in a natural haven, where we foster love for learning and the environment.

We're an incubator of innovative ideas, cultivating collaboration, creativity, and with a deep connection with nature.

Here, young minds work together and thrive amidst the beauty of the natural world.

We deliver results, not promises, and nurture responsible global citizens.

At NWS, students aged 6-16 can connect the dots, make meaningful connections, and unlock their full potential.



WHY CHOOSE NWS?

Our Purpose Page 04

Values that inspire Page 05

Our Architecture Page 06

Our Location Page 08

An Experiential learning Page 09

Our Facilities Page 10

LEARNING AT NWS

Curriculum and teaching approach Page 11

Our STEAMInn subjects Page 12

Our Assessment and reporting Page 12

Our Specialist area Page 13

Our Co-Curricular activities Page 14

Our Strength Page 15

Our Academic wellbeing Page 15

Our Saturday's Page 16



The NWS experience

Our Purpose.



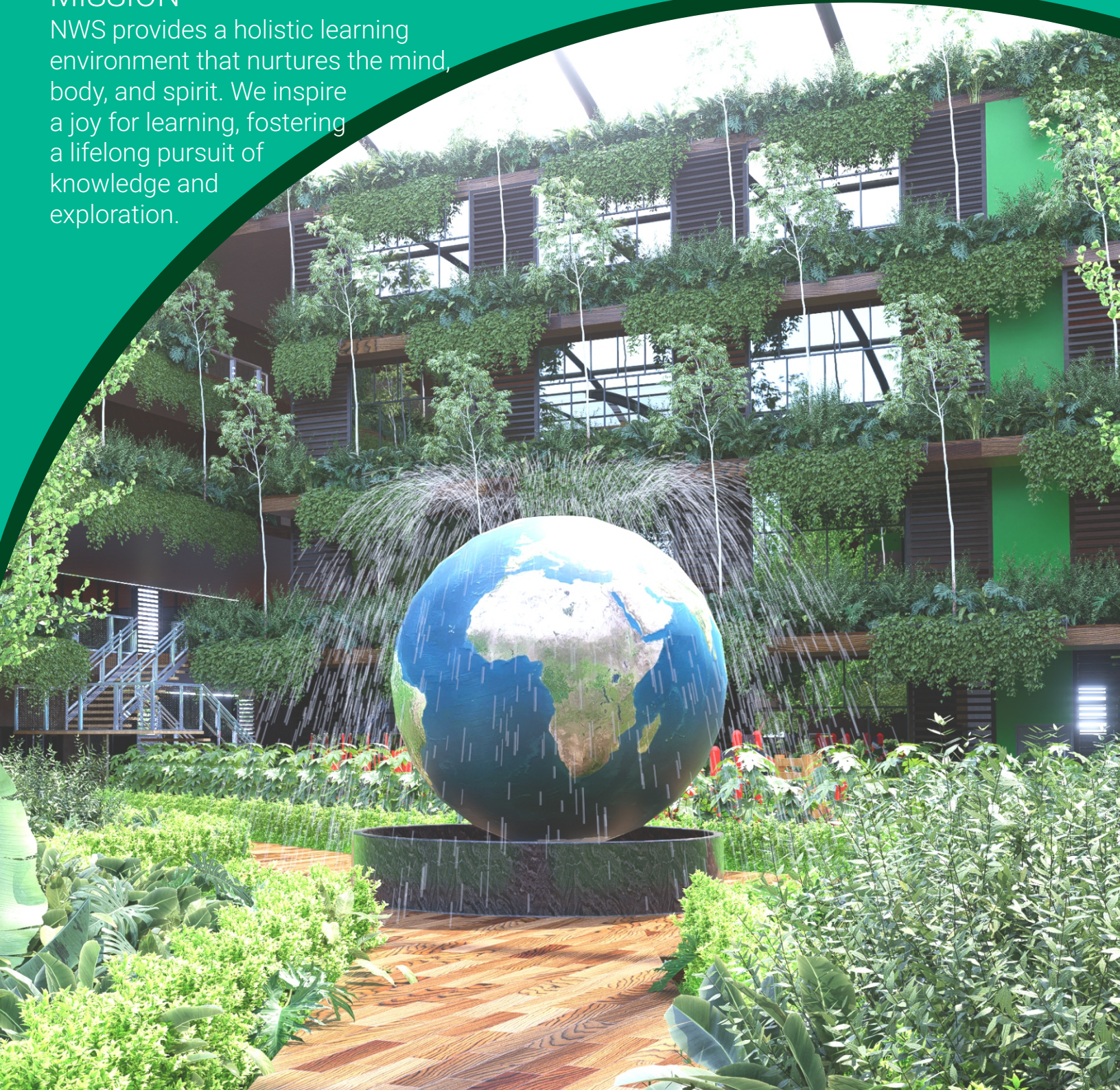
Our vision and mission provide us with our overall direction. They are fundamental in everything we do: from how we teach and learn, to how we develop programmes and learning spaces.

VISION

At NWS, we aim to unlock the unique potential of every individual, empowering them to thrive, innovate, and make a positive impact in the world.

MISSION

NWS provides a holistic learning environment that nurtures the mind, body, and spirit. We inspire a joy for learning, fostering a lifelong pursuit of knowledge and exploration.



Values that inspire.

Our values embody the spirit of NWS, rooted in our connection with nature. They reflect the shared beliefs, perspectives, and principles that bring our community together. These core values guide every aspect of our school, shaping the way we teach, learn, and grow in harmony with the natural world.

Our Motto

Engage. Enlighten. Empower.



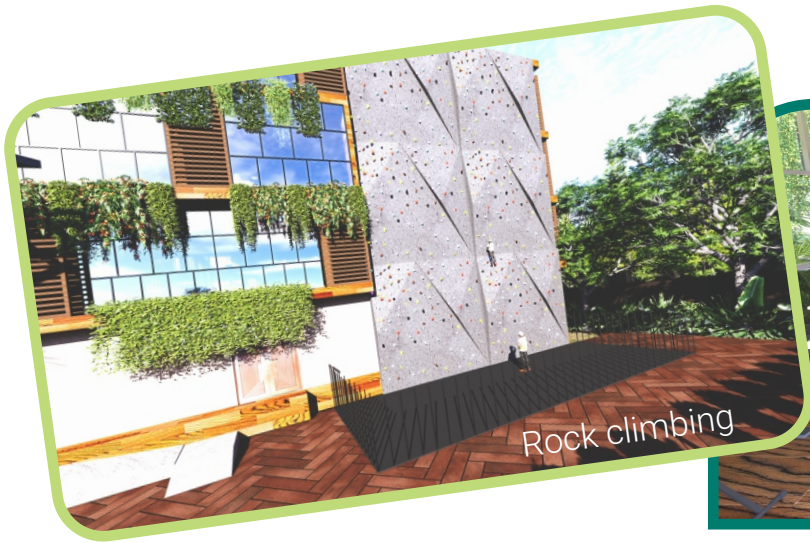
Our Architecture.

NWS has completely followed principle concept of **BIOPHILIC** Design. Biophilic Design is a design concept that aims to connect humans and the natural world within our built environments and communities. It is the practice of incorporating nature, natural materials, and concepts into human-made environments, creating a closer connection to nature and the surrounding environment. Leading School's World wide & MNC's like **Google** and **Apple** have implemented these concepts in their work spaces.



The benefits of this design includes

- Improvement in cognitive functioning and productivity
- Enhancement in creativity and memory.
- Increase in test scores and improvement in learning.
- Reduction in stress and provides restorative benefits



Rock climbing



Music room

Patterns	Stress Reduction	Cognitive Performance	Emotion, Mood, and Preference
Nature In The Space			
Visual Connection with Nature	Lowered blood pressure and heart rate	Improved mental engagement/attentiveness	Positively impacted attitude and overall happiness
Nonvisual Connection with Nature	Reduced systolic blood pressure and stress hormones	Positively impacted cognitive performance	Perceived improvements in mental health and tranquility
Nonrhythmic Sensory Stimuli	Positively impacted heart rate, systolic blood pressure, and sympathetic nervous system activity	Observed quantified behavioral measures of attention and exploration	
Thermal and Airflow Variability	Positively impacted comfort, well-being, and productivity	Positively impacted concentration	Improved perception of temporal and spatial pleasure
Presence of Water	Reduced stress, increased feelings of tranquility, lower heart rate, and blood pressure	Improved concentration and memory restoration. Enhanced perception and psychological responsiveness	Observed performance and positive emotional responses
Dynamic and Diffuse Light	Positively impacted circadian system functioning. Increased visual comfort		
Connection with Natural Systems			Enhanced positive health responses; shifted perception of environment



Cafeteria

Our Location.

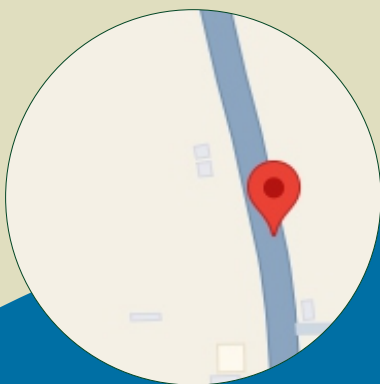


Warm and inviting learning environments allow students to discover, as they work together, that innovation and collaboration is the key to success in today's modern world.

Located on Paithan Road in Chhtrapati Sambhajinagar (west) our Campus is within municipal corporation limits.

Reducing travel time for school students provides several benefits including:

- ★ Increased time for learning and studying,
 - ★ Improved student wellbeing,
 - ★ Better attendance,
 - ★ Reduced stress levels,
 - ★ Potential for more physical activity through active commuting options,
 - ★ A positive impact on family time by minimizing time spent commuting;
- ultimately contributing to a more productive and positive school experience for students.



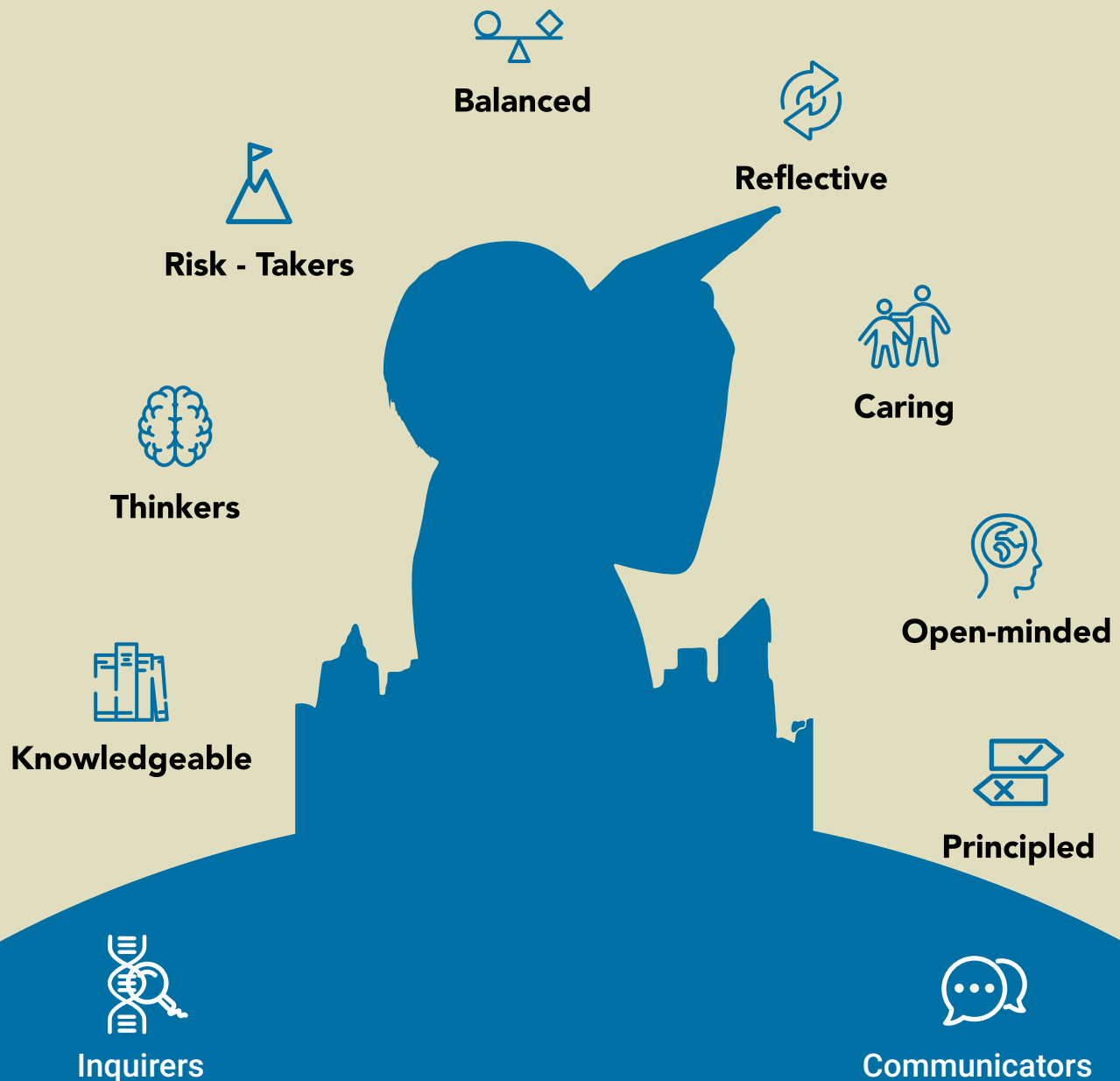
Scan the QR code for location

Gut No. 32, Nakshtrawadi, Paithan Road, Chh. Sambhajinagar

An Experiential Learning @ NWS.

We blend traditional academic subjects with real-life investigations, sparking a love of learning that extends beyond the classroom. This dynamic approach empowers NWS learners to engage with complex issues and real-world challenges.

Through this approach, NWS students become adaptable, resilient, and empowered individuals, poised to thrive in the rapidly evolving economy of the 21st century.



Our Facilities.

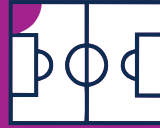
Our intentional approach to school design ensures we meet the educational, holistic and developmental needs of all our students.



Theatre



Library



Sports Fields



Swimming Pool



Tennis Court



Multi Purpose Sports Hall



Cafes



Canteen



Health Centre

SPECIALIST TEACHING ROOMS

Science Labs



Technology



Drama Studio



Art Studio



Music Studio



Music Practice Room



DIY / Lego Room



Sensory Room



VFX Room



Teamwork



Resilience



Social Skills



Service Learning
and Leadership



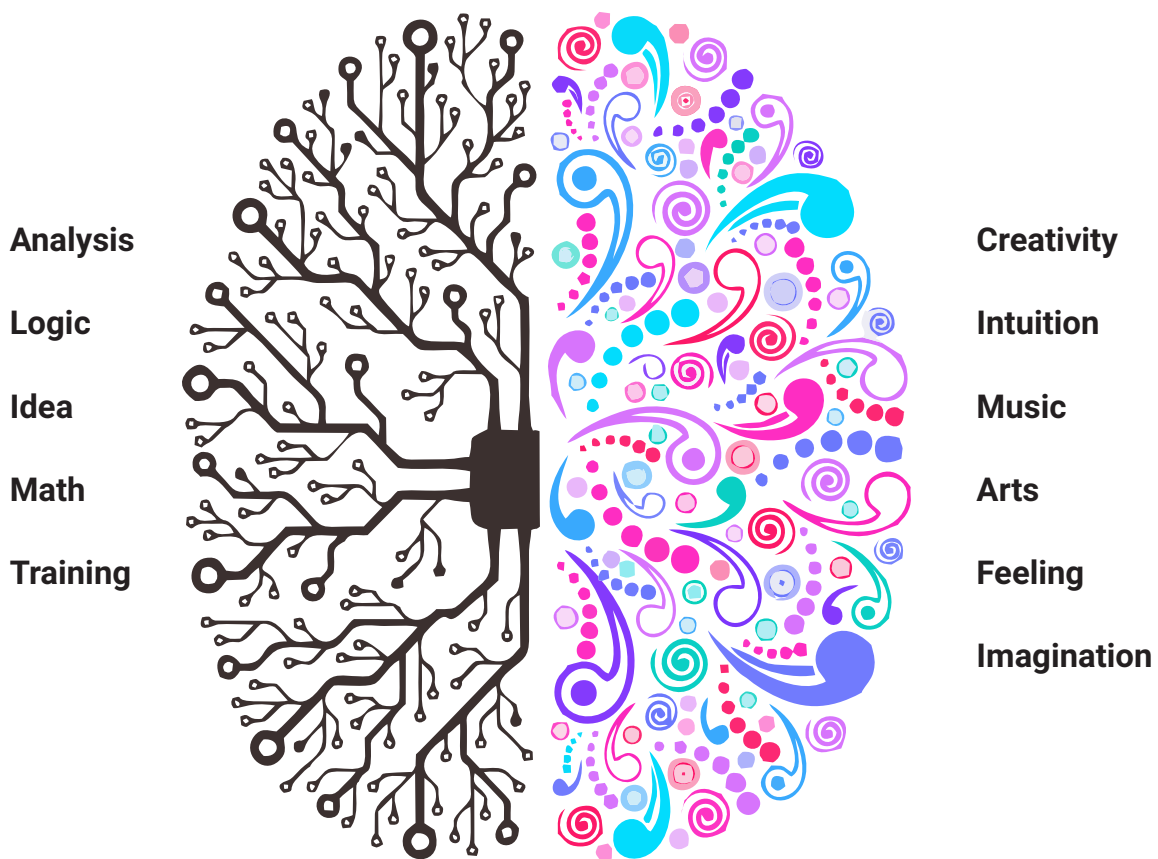
Environmental
Awareness

Curriculum and teaching approach.

Today's students are in a unique position; they are the first generation to face a world where exam results alone no longer dictate success. Success in a global environment more than ever before will require not only the ability to come up with fresh and original ideas, but the focus and dedication to turn those ideas into action.

Why are we Radically Different?

LEFT BRAIN vs RIGHT BRAIN



Our STEAMInn subjects.

At NWS, the six STEAMInn subjects are interwoven into our Units of Inquiry, fostering critical thinking, creativity, and problem-solving skills as children progress through their learning journey.

How children learn is an important as what they learn



science
how does the world work?



technology
what tools will I use?



engineering
how can it work better?



arts
how can I express myself?



mathematics
can I use math to explore & communicate?



innovation
what can I imagine or make?

OUR ASSESSMENT AND REPORTING.

Students at NWS are comprehensively assessed across **academic, music, arts and sports** knowledge, practical skills, learning ability and attitude, project portfolios and social relationships. Our focus is on helping our children develop into a well-rounded individual, and we keep our parents involved in that journey through quarterly reports and regular parent-teacher conferences.

Student achievement is benchmarked each term in an external assessment called Measures of Academic Progress (MAP).



Our Specialist Areas.

Visual Arts



Our Visual Arts program offers an immersive journey of self-expression and discovery, where students unlock their creative potential and sharpen their aesthetic sensibilities. Through hands-on creation and thoughtful interpretation, students engage deeply with visual expression, learning to communicate ideas and emotions in powerful and captivating ways. By fostering imagination, honing technical skills, and promoting critical thinking, we equip students with the tools to thrive in today's visually driven world.

Drama



Our Drama program provides a dynamic environment for students to explore and develop their theatrical talents both in and out of the classroom. At NWS, drama goes beyond performance—it's about cultivating essential communication and social skills while fueling creativity and imagination. Our elementary students embark on a transformative journey of self-discovery, growing into confident risk-takers and creative problem-solvers. Through physicality, voice, and expression, students craft compelling characters and bring stories to life on stage.

Music



Music enhances concentration and sparks creative growth. Our program, offers students enriching experiences both in and beyond the classroom. Music engages students in singing, instrument playing, and composition. Students develop skills to read, notate, and analyse music, fostering cultural awareness and collaboration. Our program fosters cultural awareness and appreciation, preparing students to succeed in an interconnected world through a rich musical journey.



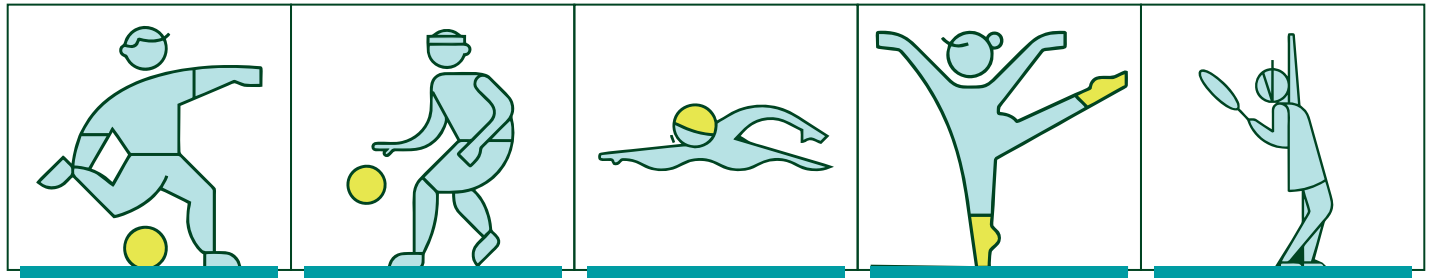
Physical Education



At NWS, our Physical Education program introduces various sports and activities, fostering a lifelong love of fitness and active play. Students develop skills in team sports and individual activities. Alongside physical skills, we emphasize the importance of health and well-being, helping students understand how an active lifestyle supports social, emotional, and physical health.



Our Co-Curricular Activities.



Football

Basketball

Swimming

Gymnastics

Tennis



Badminton

Competitive Team

Music

Drama

Theatre & Performing Arts



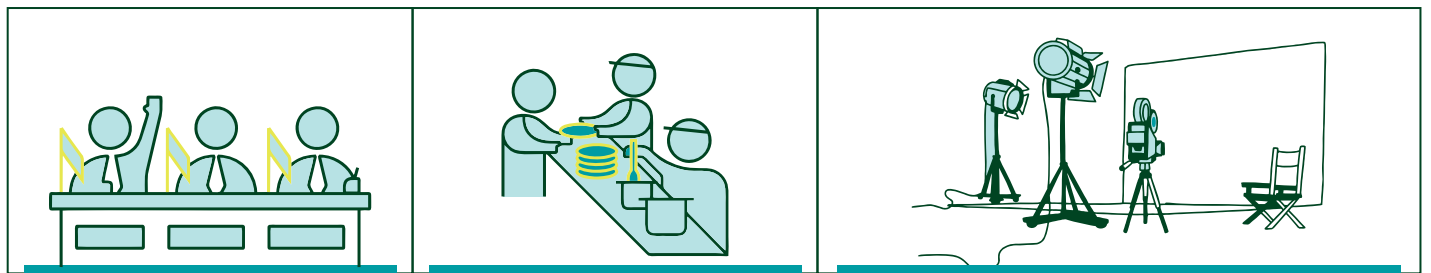
Arts & Crafts

Chess

Science & Coding

Robotics

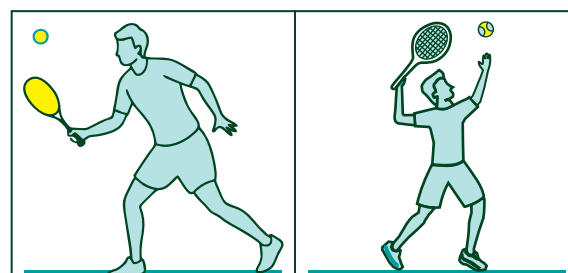
Rock-Climbing



Model United Nations

Service

Film Making



Squash

Pickleball

Our Strength.

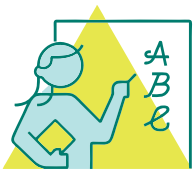
Teacher-to-Student Ratios

1:25 

Holistic Education at Every Age and Stage

Focus on early literacy, math and science through combined play-based learning and structured teaching

Core Subjects



English Language & Literacy



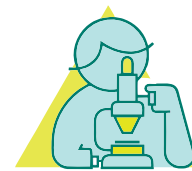
Mathematics



Integrated Science



Humanities



Units of Inquiry
(Social Sciences, Science and Health)



Strive
Daily and Weekly Social-Emotional
Development Focus (Pastoral Care)

Our Students Academic Wellbeing.

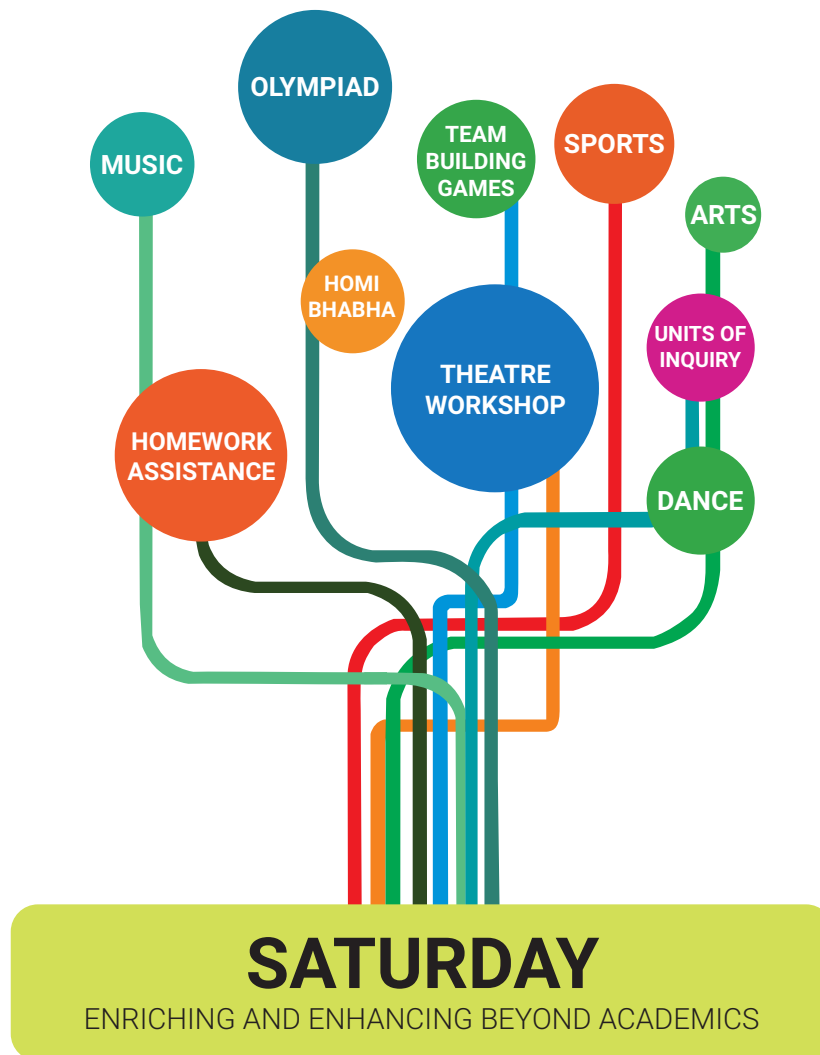
At NWS, academic wellbeing means creating a happy, healthy, safe and engaging environment, helping students thrive to become the best version of themselves.

Some of the factors that enhance student wellbeing include:

- Being involved in supportive relationships.
- Having a sense of meaning and purpose in life.
- Feeling connected to people in your community.
- Being respected, valued and encouraged to succeed.
- Having a sense of control over your emotions.
- Doing things that are meaningful and important to you.



Our Saturdays.



City Address for Admissions / Inquiry

Nature's Lap Pre School,

"Indraprastha" Near Govt. Engineering College,
Behind Institute of Engineers, Station Road-2,
Chhtrapati Sambhajnagar - 431005

📞 9764 677 677, 8669 777 031/2 🌐 www.naturesworldschool.org